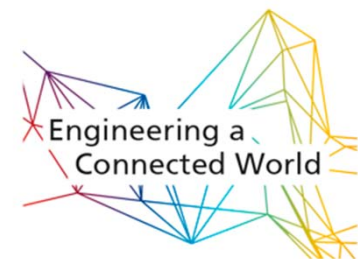


# SPINOFFS BY FRAUNHOFER FOKUS


© Matthias Heyde / Fraunhofer FOKUS

Ina Schieferdecker

Young Entrepreneurship in Istanbul and Berlin, May 13, 2016



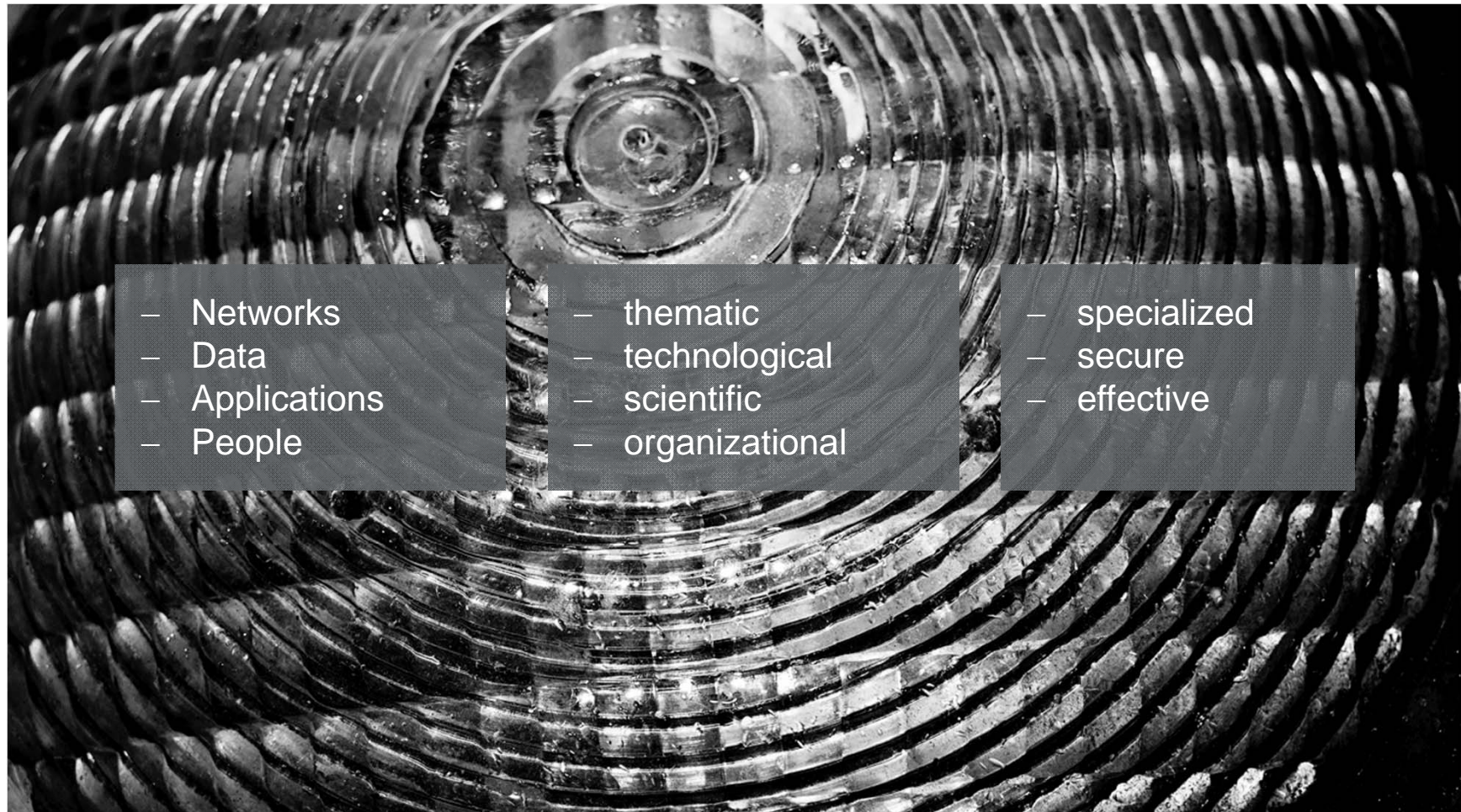
# OUR VISION

An aerial, high-contrast black and white photograph of a city grid at night. The streets are illuminated, creating a complex pattern of light and dark squares. A semi-transparent grey rectangular box is centered over the image, containing white text.

We want to actively shape the networked world and make it secure, reliable, scaleable as well as trustworthy!



# FOKUS = THE NETWORKING INSTITUTE OF FRAUNHOFER



© Matthias Heyde/ Fraunhofer FOKUS



# FOKUS STANDS FOR ...

... significant contributions to information and communication technologies:

- IP-Telephony: SIP
- Future Internet and Autonomic Communication: IMS, EPC, M2M
- Future Media: HTML5, IPTV, DASH, Smart TV
- eGovernment: Digital Public Services
- Automotive: Autosar, Car2X, connected driving
- Model-Driven Engineering: UML, MOF
- Test automation and system quality: TTCN-3, MBT, UTP
- Networked security: KATWARN
- Visualization: Automatic calibration of projection systems

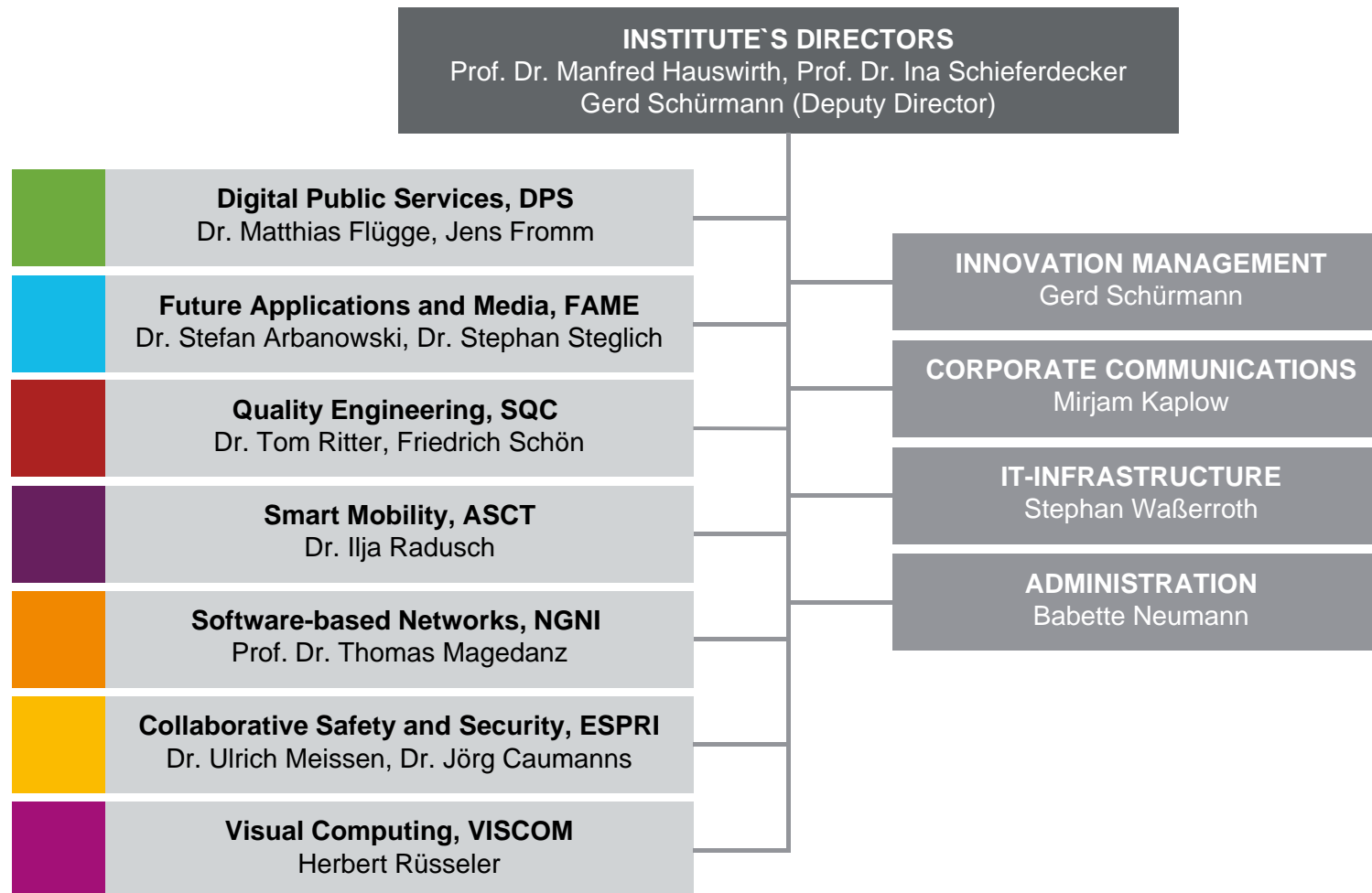


## FIGURES 2015 (SELECTION)

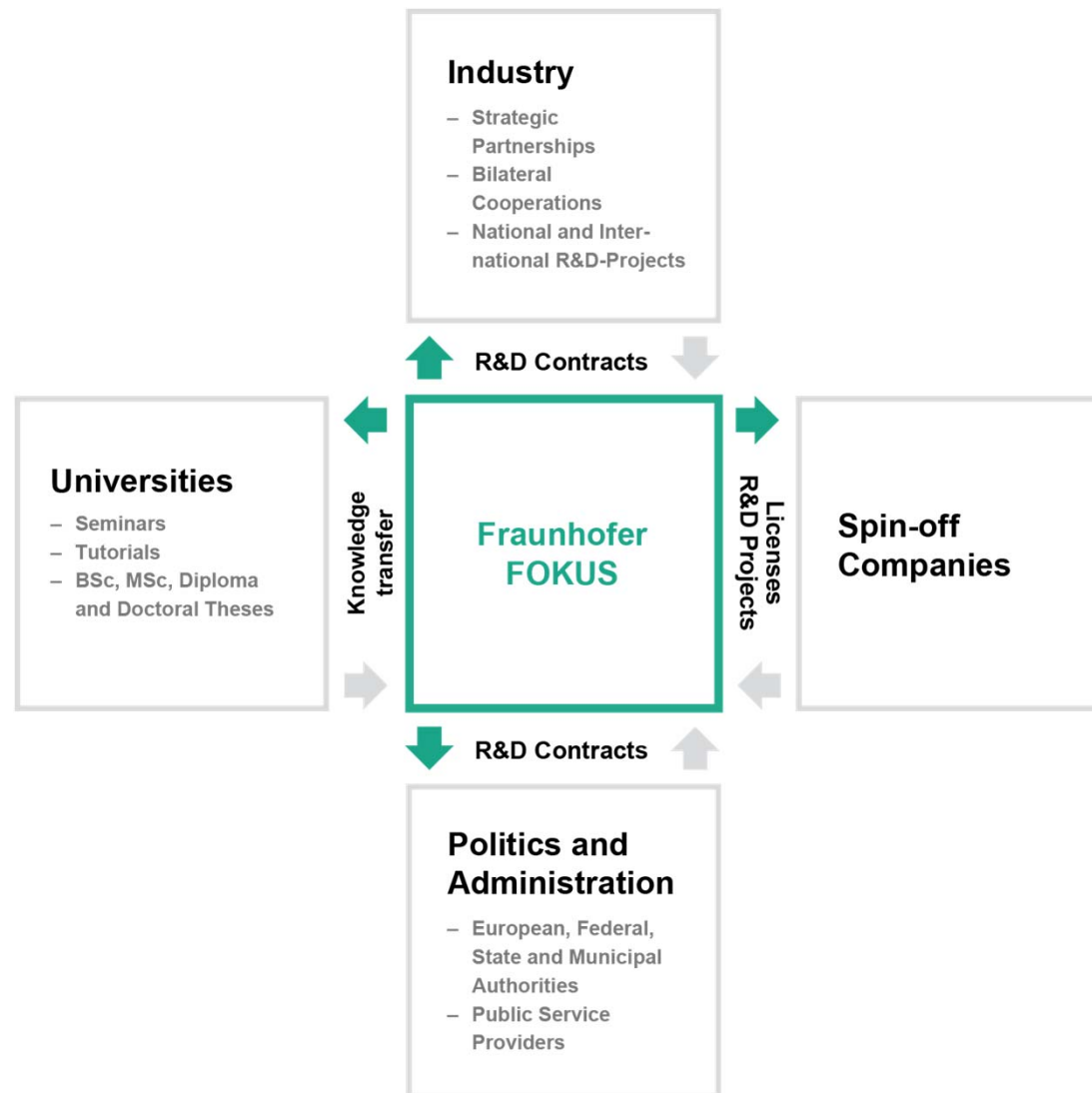


- 434 employees
- Established in 1987
- 56 EU projects
- Approx. 100 industry partners
- Approx. 200 industry projects
- 6 patents granted

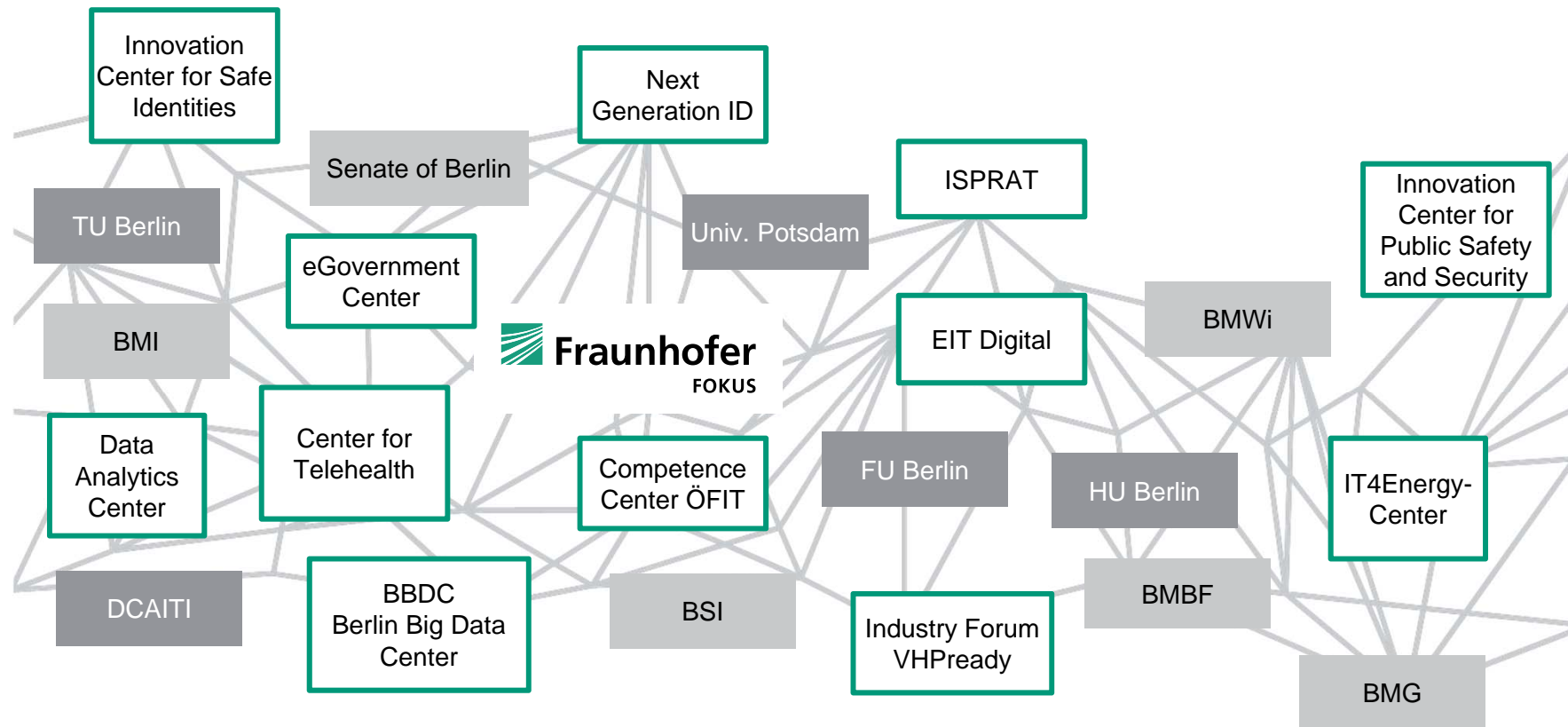
# ORGANIZATIONAL CHART



# OUR PARTNERING OPTIONS



# OUR NETWORK





# INNOVATION- AND TECHNOLOGY TRANSFER

## Innovation Hub:

- Systematic identification and utilization of project results and prototypes
- Development of business models
- Establishing an innovation network with representatives from industry and small and medium-sized enterprises (SMEs)
- Workshops, mentoring and best practices for utilizing research findings for providers of ideas and founders





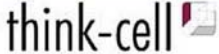






## Business Development:

- Opening of new markets for FOKUS (thematic and international)
- Acquisition of inter-departmental projects
- Strategic positioning, marketing and further development of research findings, negotiation with distributors, licensing



© Reuters/ Edgar Su

# OUR SPIN-OFFS

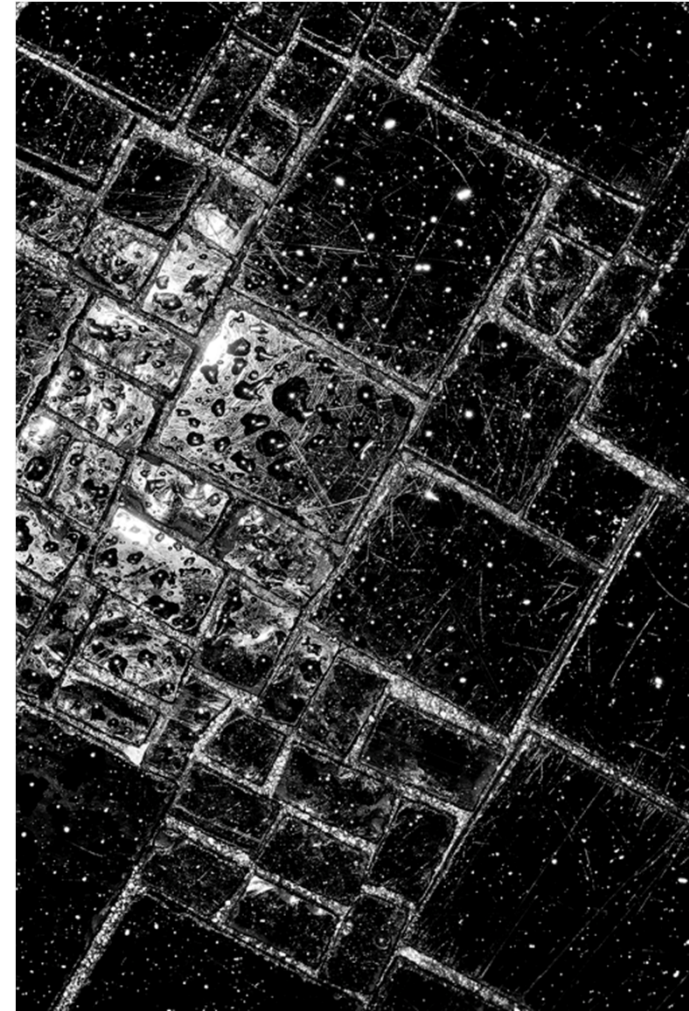
 <p>ikv++ technologies ag</p> <p>Security and safety of automotive software</p>	 <p>Gov Consulting and Development</p> <p>Planning and implementation of IT-projects in the public sector</p>	 <p>Testing Technologies</p> <p>„ready-to-run“-test solutions for networked test systems on the basis of TTCN-3</p>	 <p>iptel.org</p> <p>Setting up of VoIP-Networks based on SIP-Technology</p>	 <p>think-cell</p> <p>Presentation software for Microsoft Office-users</p>
 <p>TWONKY VISION</p> <p>Sharing of multimedia content in the digitized and networked home</p>	 <p>BitTubes</p> <p>Interactive Video</p>	 <p>core network dynamics</p> <p>OpenEPC and customer specific network solutions</p>	 <p>ITSO IT solutions</p> <p>Development of concepts, systems and applications for information systems</p>	 <p>TRIFENSE™ Intelligent Network Defense</p> <p>Research and development of methods for intrusion detection and defense</p>
 <p>pure-systems</p> <p>software technologies for multi-variant systems</p>	 <p>DeFuTech Deutsche Funktechnik</p> <p>Broadband solutions to connect rural areas to the Internet</p>	 <p>Ingrano Solutions</p> <p>Optimisation of processes for model based software development</p>	<p>WLD Innovation Trade UG</p> <p>Utilisation of Fraunhofer FOKUS technologies and product development</p>	<p>TURM Solutions GmbH</p> <p>Public warning systems and safety technologies</p>



# SPECIFICS OF OUR SPIN-OFFS

## High-tech companies

- Mainly product-/tools-oriented
- Supporting services and consultancy
- Typically after 10-15 years of development and application in industrial projects
- Spinning off with „matured prototypes“ and customers interests in maintenance and 24x7 support



# SUMMARY

## Fraunhofer FOKUS as

- R&D partner and innovation hub
- In ICT and deployment to the public spaces
- With strong track record in R&D spin-offs





## CONTACT

**Fraunhofer-Institut für  
Offene Kommunikationssysteme  
FOKUS**

Kaiserin-Augusta-Allee 31  
10589 Berlin, Germany

[info@fokus.fraunhofer.de](mailto:info@fokus.fraunhofer.de)

[www.fokus.fraunhofer.de](http://www.fokus.fraunhofer.de)

Director

**Prof. Dr. Ina Schieferdecker**

Tel. +49 (30) 34 63 -7241

[ina.schieferdecker@fokus.fraunhofer.de](mailto:ina.schieferdecker@fokus.fraunhofer.de)